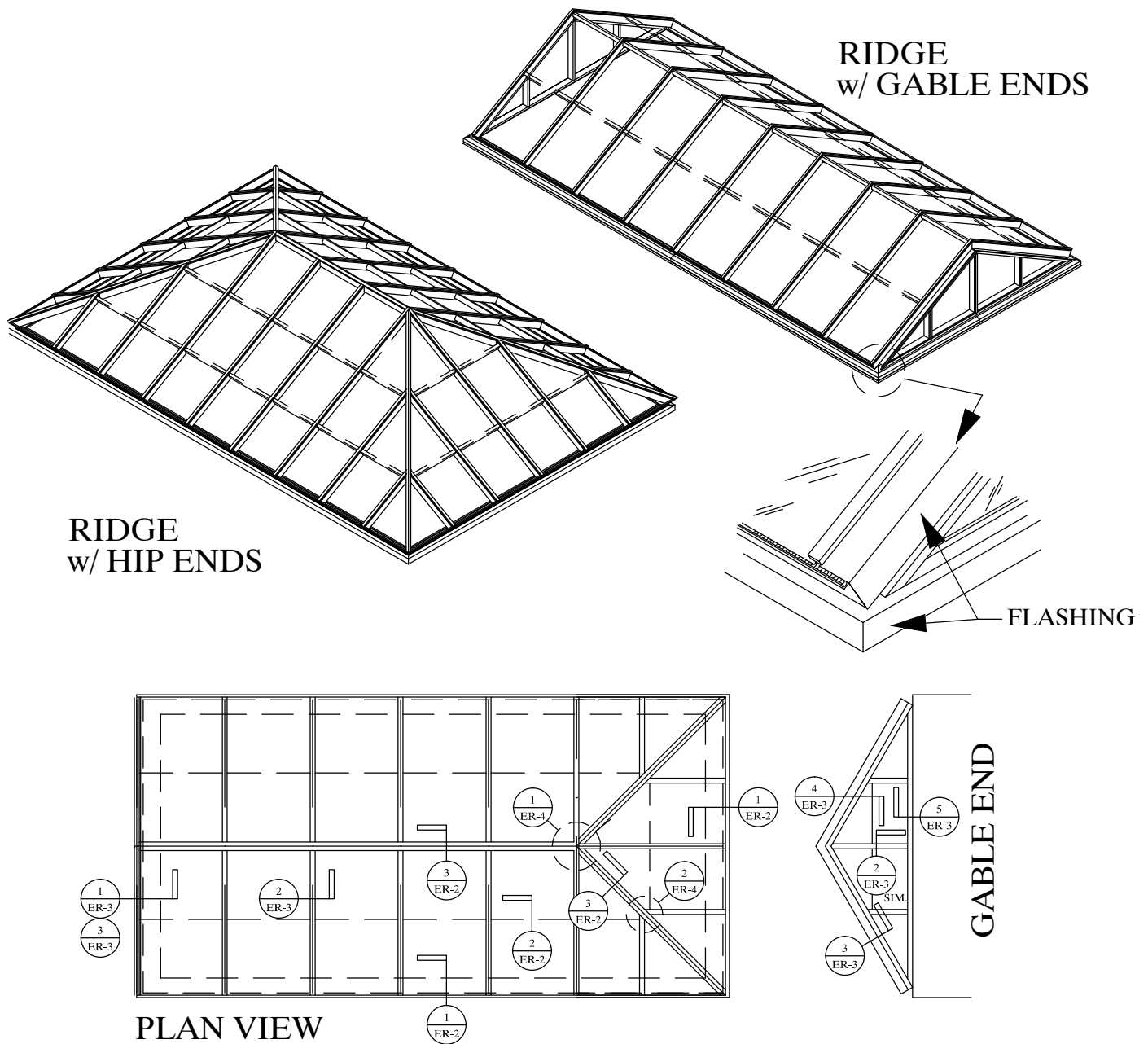


# POLY. SYSTEMS: THE EDGE HYBRID RIDGE



THE EDGE Ridges are available in any pitch (greater than 10 degrees) and size. They can be configured to have vertical ends, hipped ends, pointed hips and single slope domed or fanned ends. Ridges may also have unequal slope angles and/or lengths, and may be considered "sawtooth" ridges if a single slope is attached to a vertical or near vertical back-wall. Panel width can vary in any module from 1'-4" to 5'-0". The wider the panel, the more economical the skylight.

Super can integrate vertical glazing below the sill in one product system, with single source responsibility for skylight design, engineering, fabrication, and installation.

**Note, the supporting structural curbs must resist horizontal thrust loads, unless the design is specified as a "minimal horizontal thrust design". This may require larger extrusions, moment plates or possibly cross-ties.**



SUPER SKY PRODUCTS ENTERPRISES, LLC

www.supersky.com

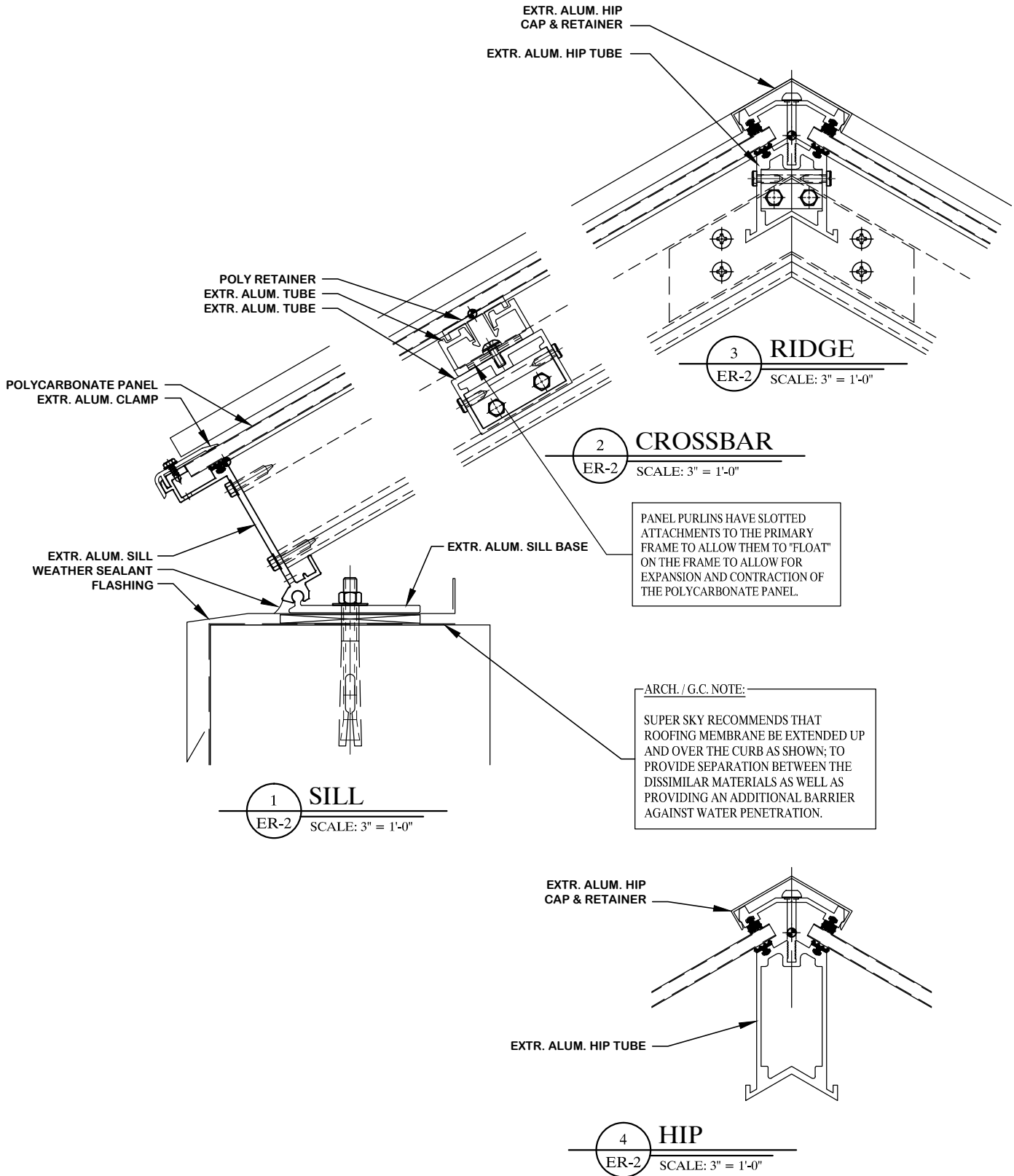
10301 N. Enterprise Drive  
Mequon, Wisconsin 53092

Phone: 262.242.2000  
Fax: 262.242.7409

ER-1

# POLY. SYSTEMS: THE EDGE HYBRID RIDGE

*(Note, framing size will be determined per design load criteria)*



**SUPER SKY PRODUCTS ENTERPRISES, LLC**

www.supersky.com

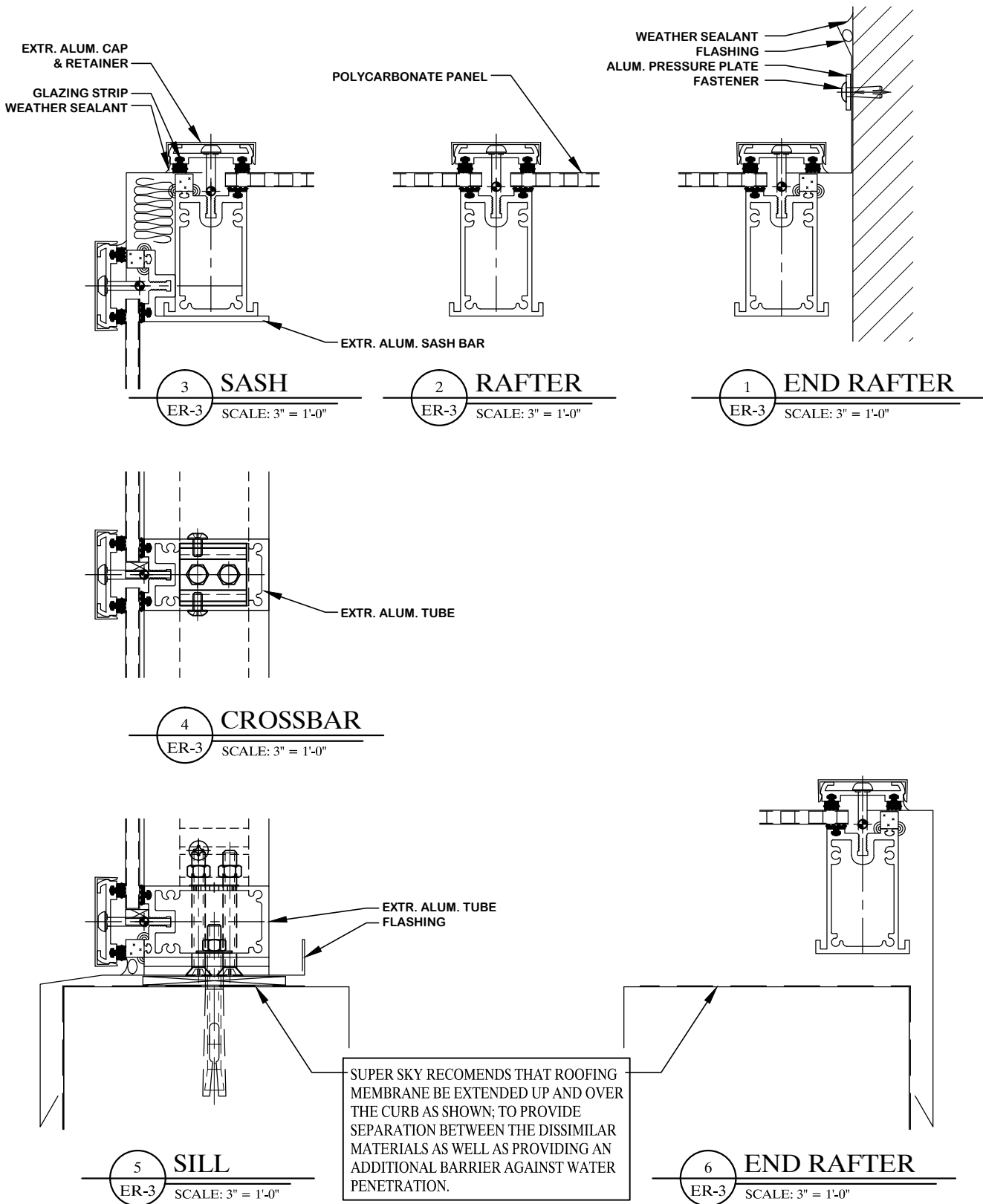
10301 N. Enterprise Drive  
Mequon, Wisconsin 53092

Phone: 262.242.2000  
Fax: 262.242.7409



# POLY. SYSTEMS: THE EDGE HYBRID RIDGE

*(Note, framing size will be determined per design load criteria)*



**SUPER SKY PRODUCTS ENTERPRISES, LLC**

www.supersky.com

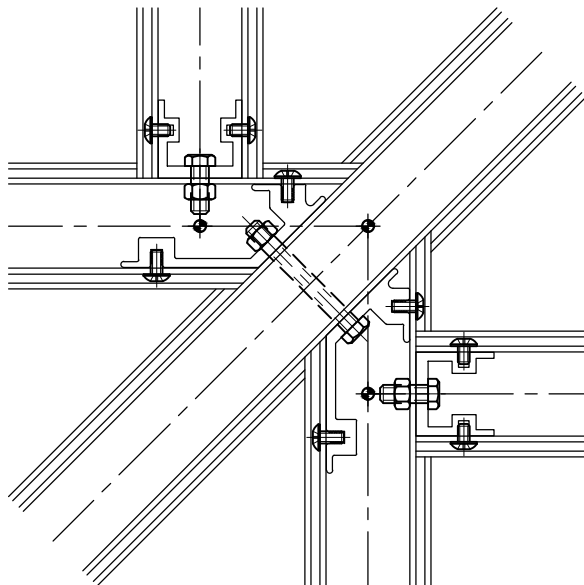
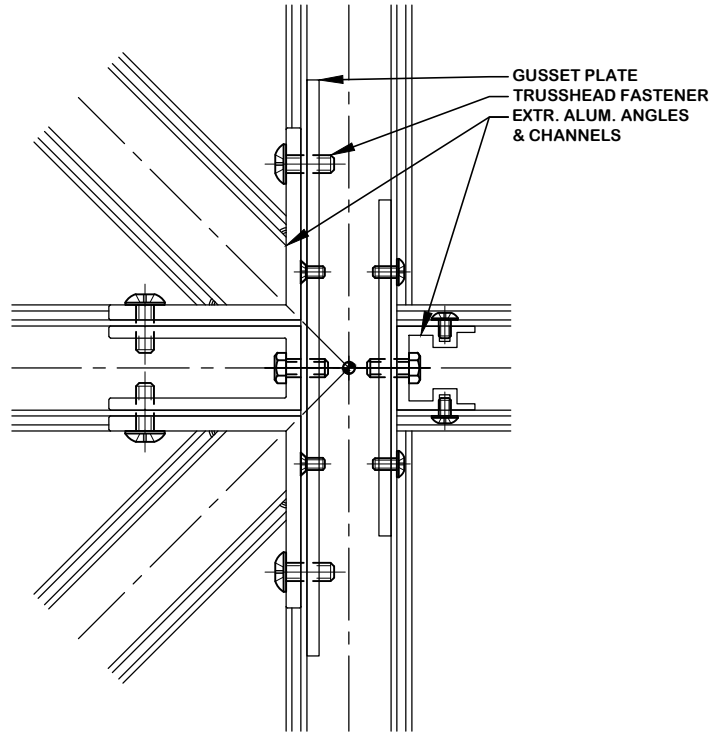
10301 N. Enterprise Drive  
Mequon, Wisconsin 53092

Phone: 262.242.2000  
Fax: 262.242.7409

ER-3

# POLY. SYSTEMS: THE EDGE HYBRID RIDGE

*(Note, framing size will be determined per design load criteria)*



1 APEX  
ER-4 SCALE: 3" = 1'-0"

2 JACKRAFTER  
ER-4 SCALE: 3" = 1'-0"

**SUPER SKY PRODUCTS ENTERPRISES, LLC**

[www.supersky.com](http://www.supersky.com)

10301 N. Enterprise Drive  
Mequon, Wisconsin 53092

Phone: 262.242.2000  
Fax: 262.242.7409

