

BASIC DETAILS

GLASS SYSTEMS

**2-SIDED CAPPED/
FLUSH GLAZED**



**4-SIDED TOTAL
FLUSH GLAZED**



**SUPER SKY
PRODUCTS, INC.**

10301 N. Enterprise Drive
Mequon, Wisconsin 53092

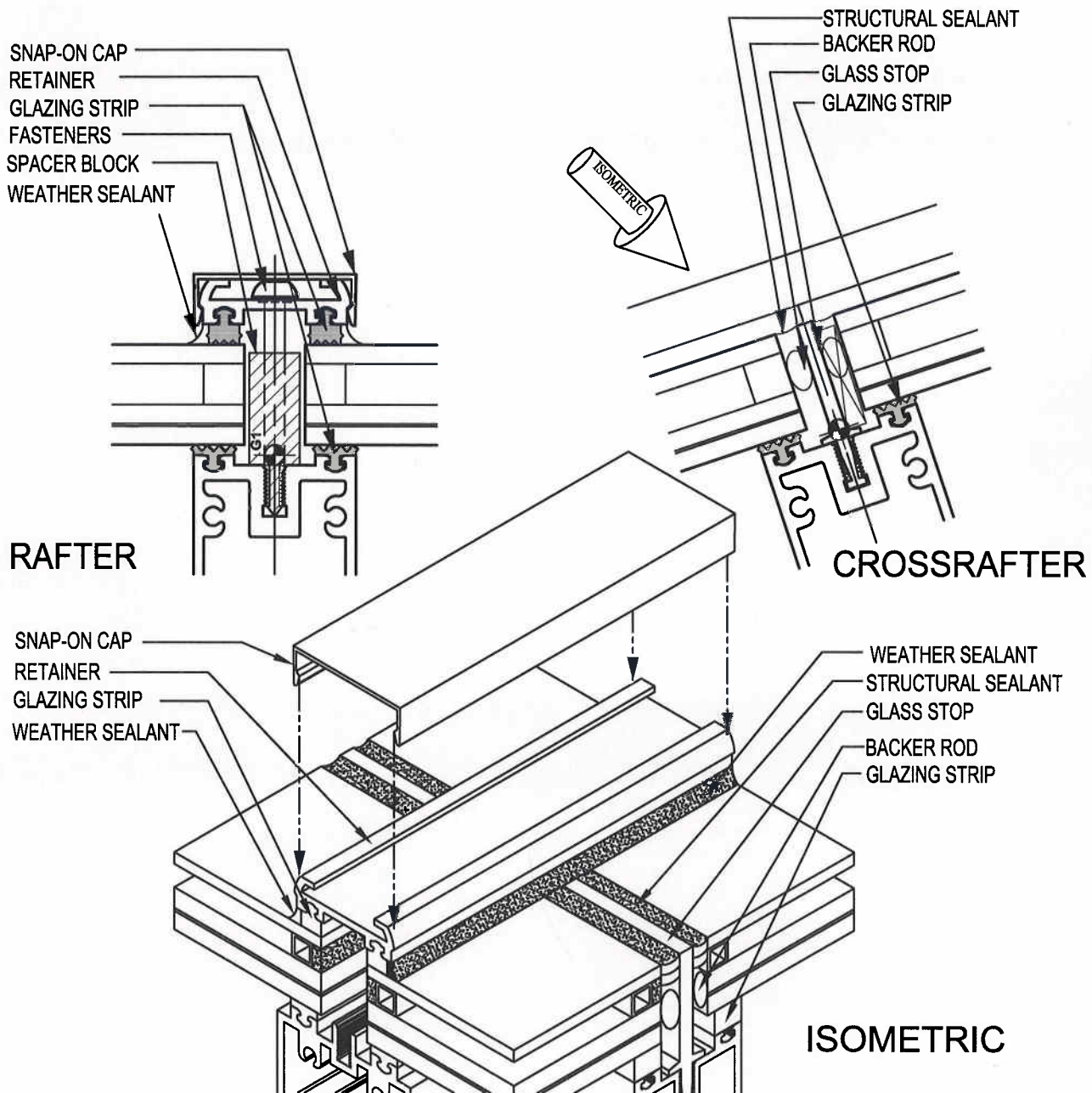
Phone: (262) 242-2000
Fax: (262) 242-7409
www.supersky.com

BD-CVR

2-SIDED CAPPED SYSTEM BASICS

Super Sky Products' typical glazing system consists of glass panels or "lites" which are attached to the main framing members using extruded aluminum "retainers" or "pressure plates". These retainers are typically fastened to the main framing members with Torx fasteners, which are sealed with a vinyl washer and located at a maximum spacing of 12" on center. EPDM glazing gaskets separate the glass from the aluminum above and below. Retainers are then continuously wet-sealed in the field with high performance silicone sealant and covered with a finished aluminum "snap-on cap" extrusion to conceal all fasteners.

At horizontal framing members, the glass is retained to the frame by using structural silicone sealant joints between the glass edges and the crossrafter glass stop. This design creates a flush joint that eliminates water damming and debris build-up. A slide-in PVC glass stop is standard at this detail to reduce thermal transfer from exterior to interior. All crossrafter structural joints and continuous pressure plate weather seal joints are married together to create a complete water-tight installation.



10301 N. Enterprise Drive
Mequon, Wisconsin 53092

Phone: (262) 242-2000
Fax: (262) 242-7409
www.supersky.com

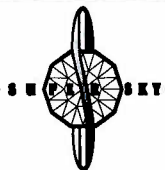
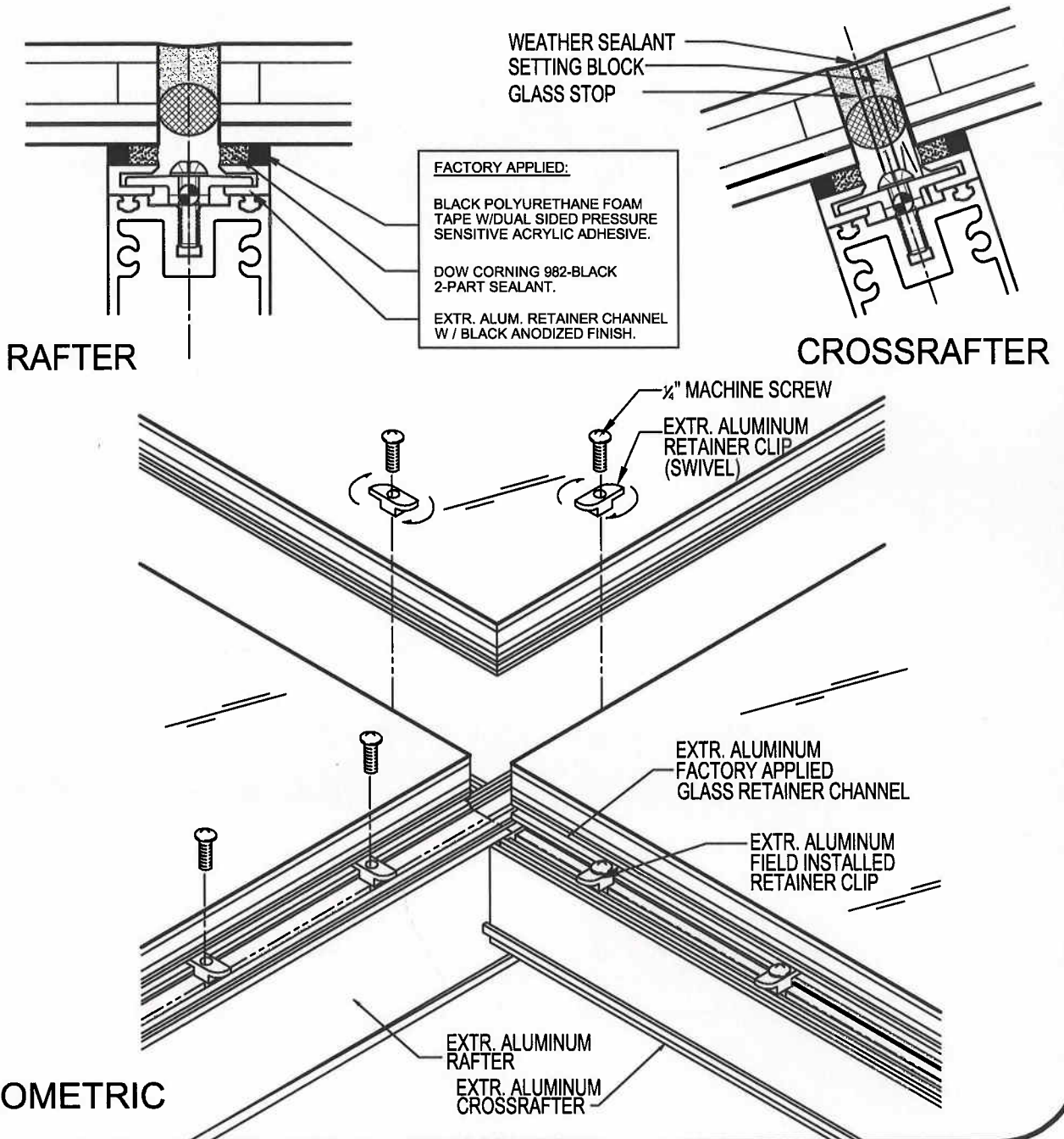
SUPER SKY
PRODUCTS, INC.



TOTAL FLUSH-GLAZING BASICS

Super Sky Products' total flush glazing system (TFG) is based on silicone sealant technology and uses unique continuous extruded aluminum retainers and intermittent hold-down clips for the attachment of the glass to the frame. The retainers are adhered to the glass using structural silicone sealant which is applied and cured in the glass fabricator's controlled factory environment. There are no exterior fasteners or aluminum caps beyond the glass surface thereby providing a true thermal break system.

Each lite is independent of its adjacent lites, and can be replaced without removal of others. The exterior weather seals are high performance silicone which are applied after all lites have been secured. The entire exterior surface of the glass is one flat plane with no obstructions to dam water or cause dirt and debris buildup.



**SUPER SKY
PRODUCTS, INC.**

10301 N. Enterprise Drive
Mequon, Wisconsin 53092
Phone: (262) 242-2000
Fax: (262) 242-7409
www.supersky.com

