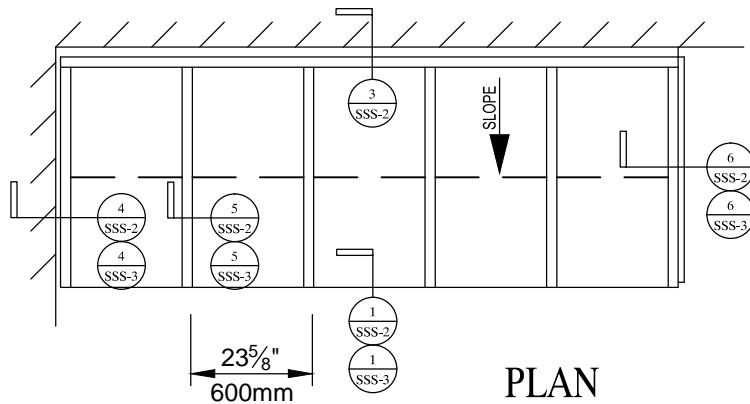
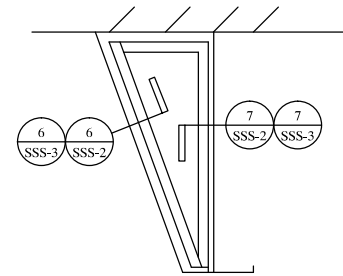


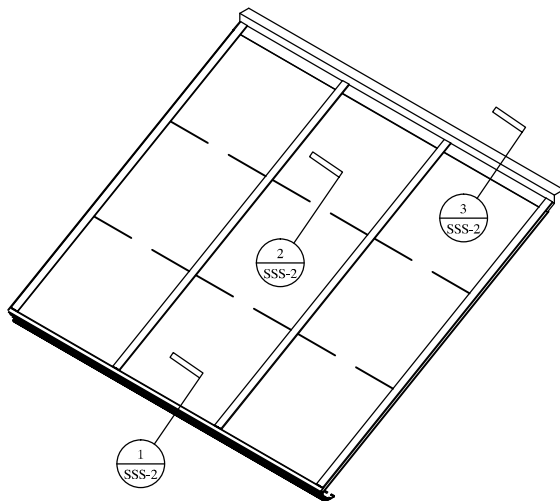
POLY. SYSTEMS: STANDING SEAM SINGLE SLOPE



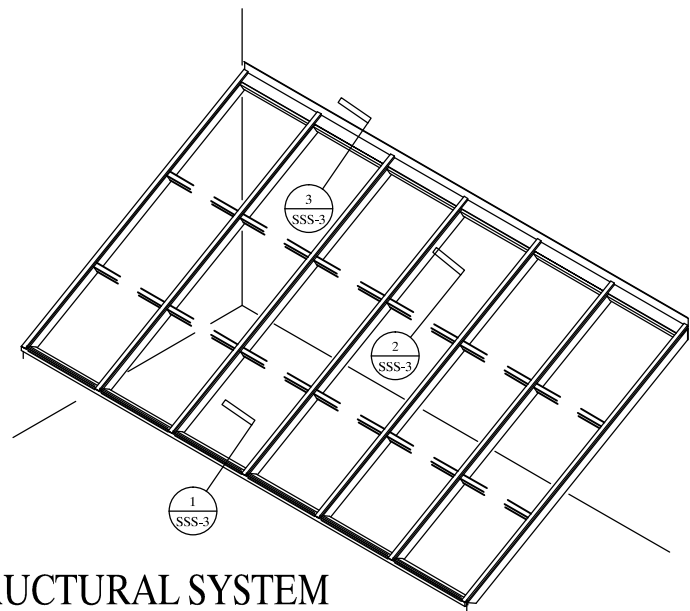
PLAN



SIDE



SKIN SYSTEM



STRUCTURAL SYSTEM

Standing Seam Single Slope skylights generally are one plane of glazing, although two or more planes can be joined by hips or valleys, or turn into the vertical plane with a "knee". Single slopes can also have vertical end walls. Single slopes will be made with panels that run continuous from head to curb for all lengths up to 39'-0". Standing Seam panel width is 23⁵/₈" (600mm).

Super Sky can integrate vertical glazing below the sill in one product system with single source responsibility for skylight design, engineering, fabrication, and installation.



SUPER SKY PRODUCTS ENTERPRISES, LLC

www.supersky.com

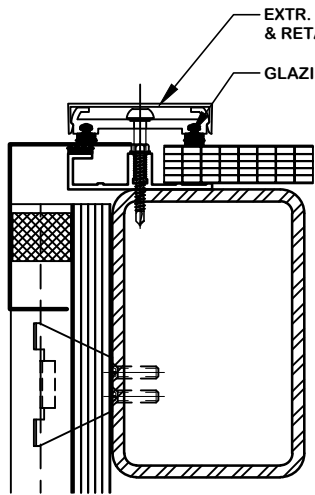
10301 N. Enterprise Drive
Mequon, Wisconsin 53092

Phone: 262.242.2000
Fax: 262.242.7409

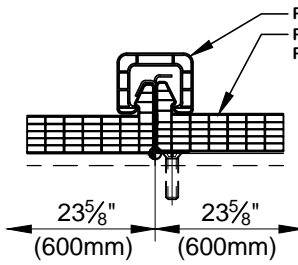
SSS-1

POLY. SYSTEMS: STANDING SEAM SINGLE SLOPE

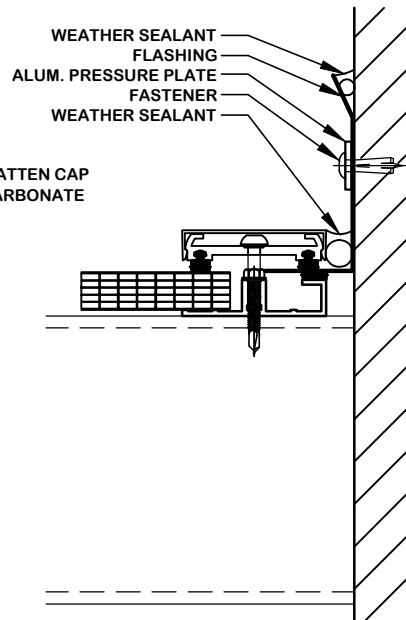
(Skin System)



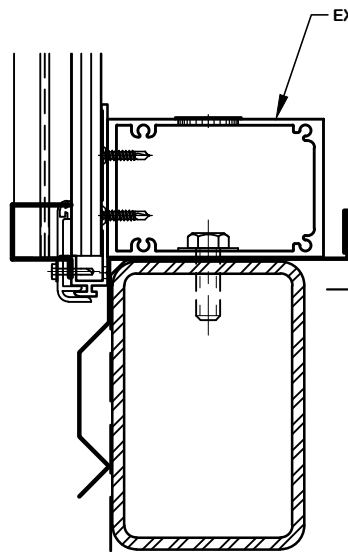
6 SILL
SSS-2 SCALE: 3" = 1'-0"



5 RAFTER
SSS-2 SCALE: 3" = 1'-0"

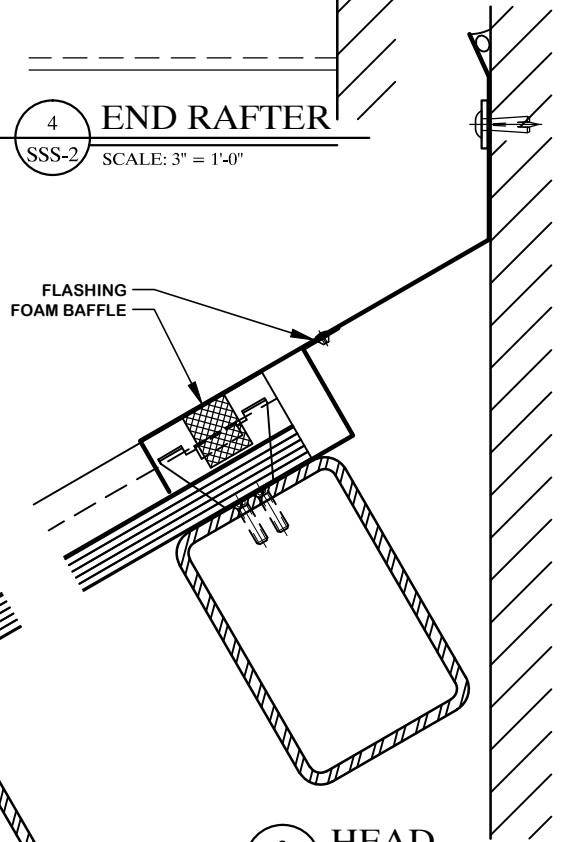


4 END RAFTER
SSS-2 SCALE: 3" = 1'-0"

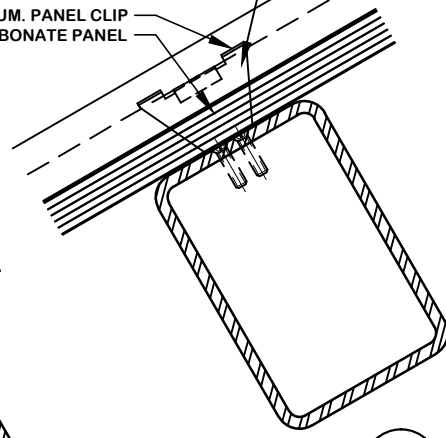


7 SILL
SSS-2 SCALE: 3" = 1'-0"

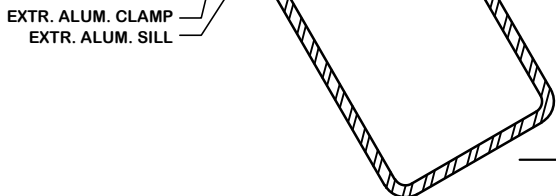
STANDING SEAM PANELS ARE NOT PINNED BY THE HOLD DOWN CLIPS. THE PANEL WILL "FLOAT" WITHIN THE CLIPS TO ALLOW FOR EXPANSION AND CONTRACTION.



3 HEAD
SSS-2 SCALE: 3" = 1'-0"



2 CROSSBAR
SSS-2 SCALE: 3" = 1'-0"



1 SILL
SSS-2 SCALE: 3" = 1'-0"

SUPER SKY PRODUCTS ENTERPRISES, LLC

www.supersky.com

SSS-2

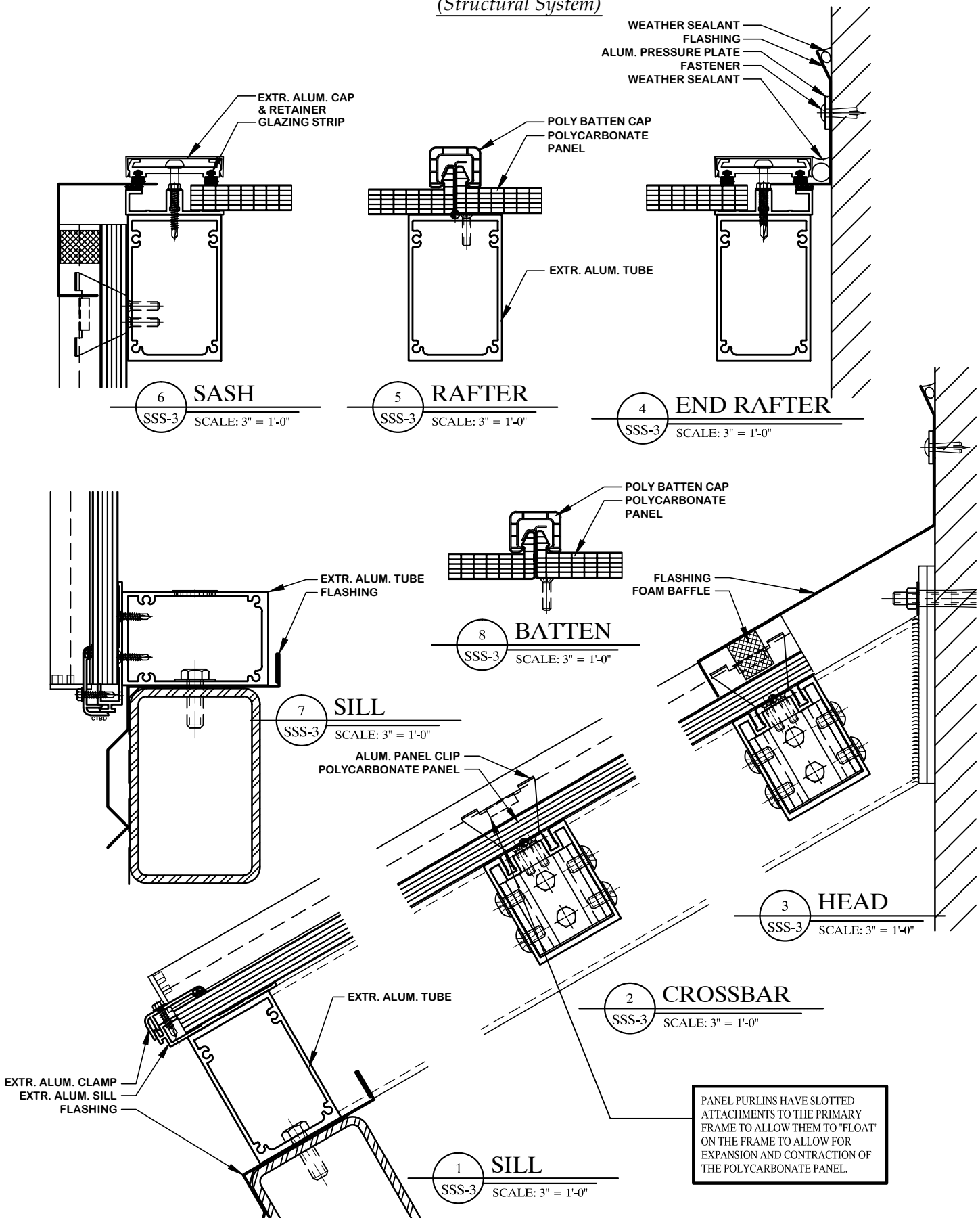
10301 N. Enterprise Drive
Mequon, Wisconsin 53092

Phone: 262.242.2000
Fax: 262.242.7409



POLY. SYSTEMS: STANDING SEAM SINGLE SLOPE

(Structural System)



SUPER SKY PRODUCTS ENTERPRISES, LLC

www.supersky.com

10301 N. Enterprise Drive
Mequon, Wisconsin 53092

Phone: 262.242.2000
Fax: 262.242.7409

SSS-3

